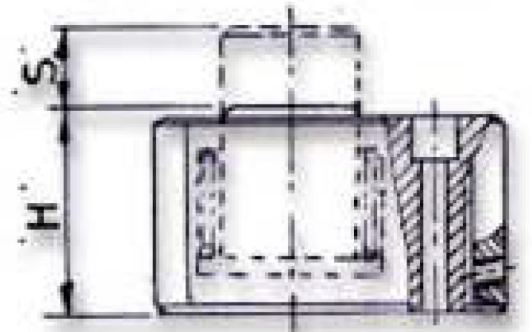
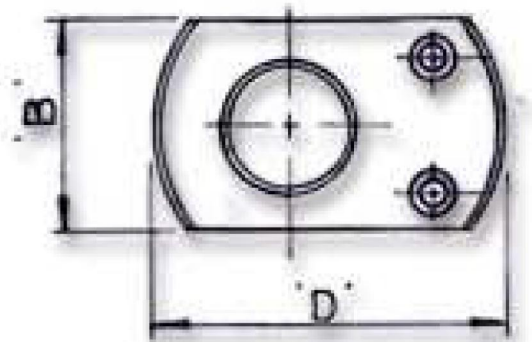




SERIES : FSP : FLAT & LIGHT WEIGHT, SPRING RETURN CYLINDER WITH PLAIN RAM

Applications : These cylinders are ideal for areas where closed height is a constraint and are suited for pushing, raising, separating and lowering of viaduct structures - bridges and crane repairs, site maintenance, aligning and lowering of heavy machinery, lifting of motors.



Features:

- Designed for applications requiring low height, low lift, portability and easy positioning.
- Heat treated alloy steel body.
- Ram return by spring, allows use in any position.
- Hard chrome plated ram for surface protection.
- Provided with mounting holes for fixing.
- Supplied with quick coupler with dust cap.
- Grooved ram ends require no saddle.
- Working pressure 700 bar.
- Cylinders tested to ANSI standards.

SPECIFICATIONS :

MODEL	CAPACITY	STROKE	CLOSED HEIGHT 'H' mm	BODY SIZE 'B' x DIA 'D' Mm x mm	APPROX WEIGHT kg
FSP 5/16	5	16	48	42 x 65	0.8
FSP 5/25	5	25	62	42 x 65	1.1
FSP 10/16	10	16	50	58 x 84	1.5
FSP 10/25	10	25	70	58 x 84	2.1
FSP 20/16	20	16	56	76 x 102	2.6
FSP 20/25	20	25	82	76 x 102	3.8
FSP 30/16	30	16	60	96 x 114	3.8
FSP 30/25	30	25	88	96 x 114	5.5
FSP 50/16	50	16	67	115 x 140	6.4
FSP 50/25	50	25	97	115 x 140	9.1
FSP 100/16	100	16	86	155 x 178	14.0
FSP 100/25	100	25	110	155 x 178	17.0