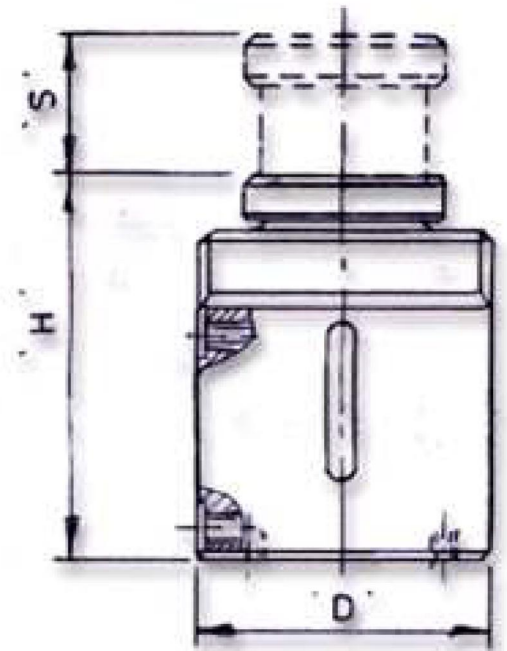




SERIES : LD : LIGHT WEIGHT, DOUBLE ACTING CYLINDER

APPLICATIONS: These cylinders are suitable for all operations where cycle time is of prime importance and ram return need to be controlled by oil pressure. These are ideal for industrial production, hydraulic presses, construction work and pile testing.



Features:

- Heat treated alloy steel body
- Ram return by oil pressure
- Hard chrome plated ram for surface protection.
- Best quality Phosphorus bronze guide bush.
- High pressure, long life seals.
- Non skidding heat treated saddle.
- Supplied with quick change couplers with dust caps
- Female threaded ram end, threading on cylinder body, fixing holes at the base, surface treatment on cylinder body, tilting saddle are provided on request.
- Working pressure 700 bar.
- Cylinders tested to ANSI standards.



Bemco Jacking Systems Pvt. Ltd.

MODEL	CAPACITY tons		STROKE 'S' mm	CLOSED HT. 'H' mm	OUTER DIA. 'D' mm	APPROX WEIGHT kg
	FOR.	RET.				
LD 5/50	5	2.6	50	180	50	2.5
LD 5/100	5	2.6	100	230	50	3.0
LD 5/150	5	2.6	150	280	50	3.6
LD 5/250	5	2.6	250	380	50	4.7
LD 5/350	5	2.6	350	480	50	5.8
LD 10/50	10	3.6	50	202	73	6.1
LD 10/100	10	3.6	100	252	73	7.6
LD 10/150	10	3.6	150	302	73	9.0
LD 10/250	10	3.6	250	402	73	11.8
LD 10/350	10	3.6	350	502	73	14.6
LD 20/50	20	13.3	50	210	90	9.7
LD 20/100	20	13.3	100	260	90	9.7
LD 20/150	20	13.3	150	310	90	13.9
LD 20/250	20	13.3	250	410	90	18.1
LD 20/350	20	13.3	350	510	90	22.3
LD 30/50	30	13.3	50	220	102	12.8
LD 30/100	30	13.3	100	270	102	15.3
LD 30/150	30	13.3	150	320	102	17.7
LD 30/250	30	13.3	250	420	102	22.6
LD 30/350	30	13.3	350	520	102	27.5
LD 50/50	50	18.0	50	227	127	21.0
LD 50/100	50	18.0	100	277	127	25.0
LD 50/150	50	18.0	150	327	127	28.0
LD 50/250	50	18.0	250	427	127	36.0
LD 50/350	50	18.0	350	527	127	44.0
LD 75/50	75	24.0	50	240	150	31
LD 75/100	75	24.0	100	290	150	37
LD 75/150	75	24.0	150	340	150	42
LD 75/250	75	24.0	250	440	150	53
LD 75/350	75	24.0	350	540	150	65
LD 100/50	100	44.0	50	250	175	43
LD 100/100	100	44.0	100	300	175	50
LD 100/150	100	44.0	150	350	175	57
LD 100/250	100	44.0	250	450	175	70
LD 100/350	100	44.0	350	550	175	84
LD 150/50	150	77.0	50	260	215	67
LD 150/100	150	77.0	100	310	215	77
LD 150/150	150	77.0	150	360	215	87
LD 150/250	150	77.0	250	460	215	107
LD 150/350	150	77.0	350	560	215	127
LD 200/50	200	109	50	280	248	96
LD 200/100	200	109	100	330	248	108
LD 200/150	200	109	150	380	248	120
LD 200/250	200	109	250	480	248	145
LD 200/350	200	109	350	580	248	169