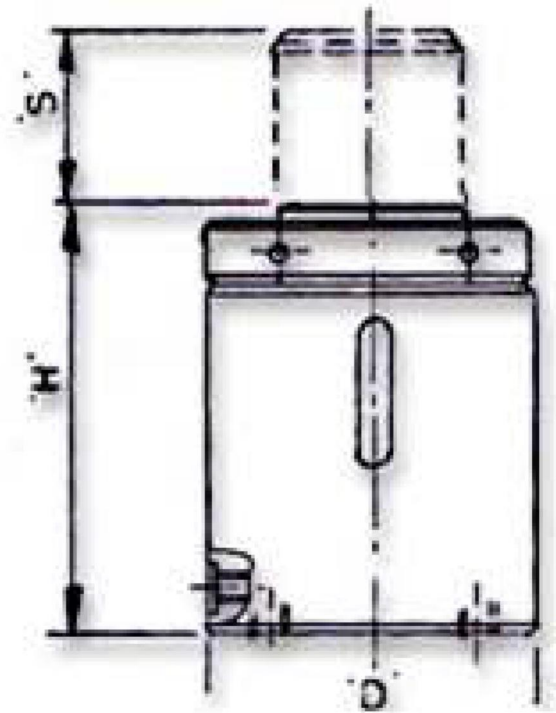




SERIES : LLT : LIGHT WEIGHT, LOAD RETURN CYLINDER WITH THREADED RAM

Applications : These cylinders are ideally suited for supporting function in building foundations and mining industries, in the handling of heavy industrial equipments, steel constructions and for mobile transport systems.



Features :

- Heat treated alloy steel body.
- Locking nut on threaded ram holds the load in position, even after disconnecting the pumping Unit.
- High pressure , long life seals.
- Non-skidding head treated saddle.
- Supplied with quick coupler with dust cap.
- Fixing holes at the base, surface treatment on cylinder body, tilting saddle can also be provided on request.
- As the ram has no positive pulling force, it has to lower by its own weight of the load previously lifted or by an external force.
- Working pressure 700 bar.
- Cylinders tested to ANSI standards.



Bemco Jacking Systems Pvt. Ltd.

MODEL	CAPACITY tons	STROKE 'S'	CLOSED HT. 'H' mm	OUTER DIA. 'D' mm	APPROX WEIGHT kg
LLT 10/50	10	50	124	70	3.4
LLT 10/50	10	75	149	70	4.1
LLT 10/100	10	100	174	70	4.7
LLT 10/150	10	150	224	70	5.9
LLT 20/50	20	50	126	92	6.1
LLT 20/75	20	75	151	92	7.2
LLT 20/100	20	100	176	92	8.2
LLT 20/150	20	150	226	92	10.5
LLT 30/50	30	50	136	102	7.6
LLT 30/75	30	75	161	102	8.7
LLT 30/100	30	100	186	102	9.8
LLT 30/150	30	150	236	102	12.0
LLT 50/50	50	50	164	130	15.0
LLT 50/100	50	100	214	130	19.0
LLT 50/150	50	150	264	130	23.0
LLT 50/300	50	300	414	130	34.0
LLT 100/50	100	50	187	175	34.0
LLT 100/100	100	100	237	175	42.0
LLT 100/150	100	150	287	175	49.0
LLT 100/300	100	300	437	175	70.0
LLT 150/50	150	50	209	215	56.0
LLT 150/100	150	100	259	215	67.0
LLT 150/150	150	150	309	215	79.0
LLT 150/300	150	300	459	215	113.0
LLT 200/50	200	50	242	250	92.0
LLT 200/100	200	100	292	250	107.0
LLT 200/150	200	150	342	250	123.0
LLT 200/300	200	300	492	250	180.0
LLT 250/50	250	50	248	282	116.0
LLT 250/100	250	100	298	282	138.0
LLT 250/150	250	150	348	282	159.0
LLT 250/300	250	300	498	282	223.0
LLT 300/50	300	50	295	300	159.0
LLT 300/100	300	100	345	300	184.0
LLT 300/150	300	150	395	300	209.0
LLT 300/300	300	300	545	300	284.0
LLT 400/50	400	50	334	350	246.0
LLT 400/100	400	100	384	350	281.0
LLT 400/150	400	150	434	350	314.0
LLT 400/300	00	300	584	350	417.0
LLT 500/50	500	50	374	400	359.0
LLT 500/100	500	100	424	400	402.0
LLT 500/150	500	150	474	400	445.0
LLT 500/300	500	300	624	400	575.0
LLT 600/50	600	50	394	435	453.0
LLT 600/100	600	100	444	435	509.0
LLT 600/150	600	150	494	435	565.0
LLT 600/300	600	300	644	435	733.0
LLT 800/50	800	50	455	500	687.0